

## DESCRIPTION

- Extruded aluminum housing
- Die-cast aluminum end caps
- Integrated visor option - solid, perf or opal window
- Die-formed 94% reflective dual-finish anodized aluminum reflector
- Electrostatically applied polyester powder coat paint finish
- Gasketed hinging doorframe
- PointGrab™ adjustment

<b>Catalog #</b>		<b>Type</b>
<b>Project</b>		
<b>Comments</b>		<b>Date</b>
<b>Prepared by</b>		

## SPECIFICATION FEATURES

### Construction

Housing is 6063 aluminum extrusions with die-cast aluminum end caps without exposed fasteners. Hinging doorframe for easy access to gasketed lamp compartment, and stainless steel hardware. Optional integrated extruded aluminum cutoff visor.

### Reflector

Die-formed 94% reflective dual-finish anodized aluminum.

### Aiming

PointGrab adjustable and lockable aiming system is preset at the factory (25 degrees max. cp. above nadir). Additional 10-degree indicator marks allow for precise adjustments.

### Lens

Clear tempered glass, micro-prismatic tempered glass or optional U.V. glass.

### Electrical

Use 90-degree supply wire. Tungsten - DC Bayonet, Metal Halide - G12 and Fluorescent - G24Q-3. Ballast is integral to luminaire

### Mounting

Luminaire is provided with (2) universal mounting brackets. Consult factory for hanger bars.

### Finish

Luminaire housing is finished using electrostatically applied polyester powder coat paint. Consult factory for custom colors.

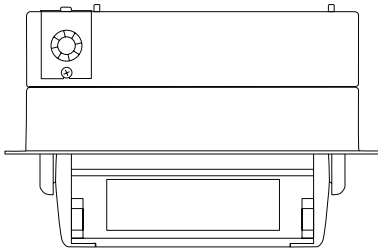
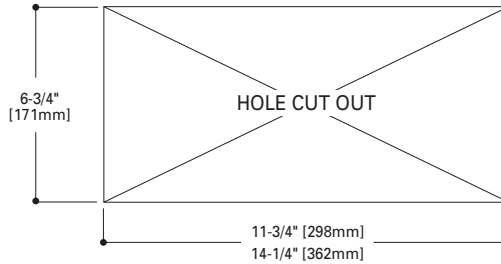
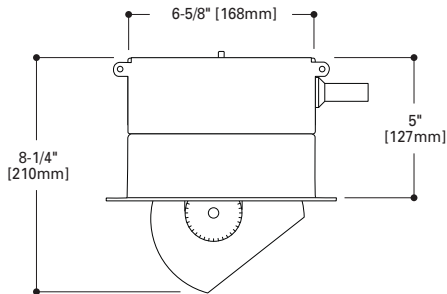
### Labels

UL and CUL listed for damp locations.



## ROUNDEL

Small Integral  
**SEMI-RECESSED**



### LAMP CHART

SOURCE	WATTAGE	LENGTH
Tungsten	100	10-3/4"
	150	13"
	250	13"
Metal Halide	39	10-3/4"
	70	13"
	150	13"
Fluorescent	26	13"

## ORDERING INFORMATION

Sample Number: RO-SI-P-1-E150-120-W-SRI

### Product

- RN**: Roundel No Visor
- RS**: Roundel Solid Visor
- RP**: Roundel Perf Visor
- RO**: Roundel Opal Visor

Notes: 1 Fluorescent Indoor Only.

### Size - In/Outdoor

- SI**: Small Indoor

### Lens

- N**: None<sup>1</sup>
- P**: Micro-Prismatic
- C**: Clear
- U**: U.V.

### Number of Lamps

- 1**: 1 Lamp

### Lamp Type

- T**: Tungsten Halogen
- E**: Metal Halide - Electronic
- F**: Fluorescent - Electronic

### Wattage

- 026**: 26W
- 039**: 39W
- 070**: 70W
- 100**: 100W
- 150**: 150W
- 250**: 250W

### Voltage

- 120**: 120V
- 277**: 277V
- 347**: 347V

### Finish

- W**: White
- S**: Silver
- B**: Bronze
- C**: Custom

### Mounting

- SRI**: Semi-Recessed / Integral